



7-PIECE ELECTRONIC DRUM KIT

SKU: LYXEDS750

Sound Module Operations Guide

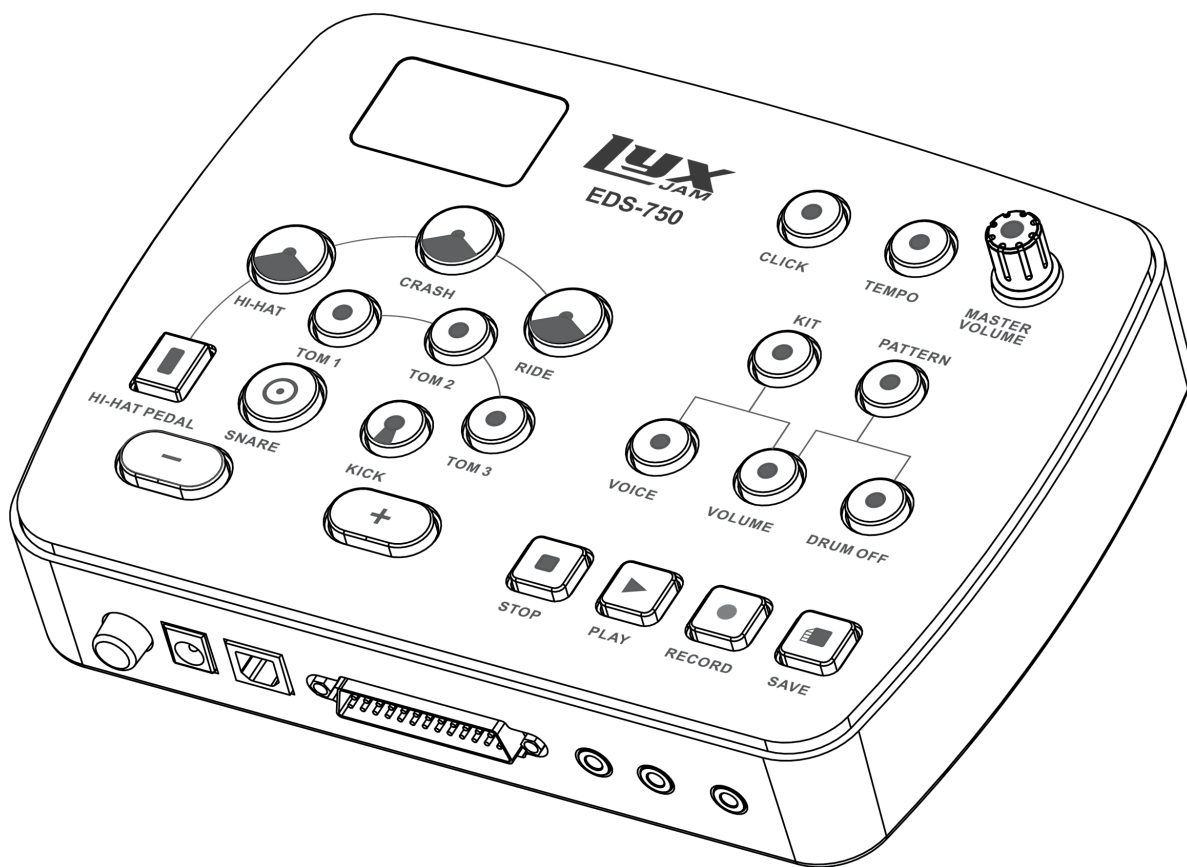


TABLE OF CONTENTS

| | |
|-------------------------|----|
| FEATURES | 3 |
| SAFETY PRECAUTIONS | 3 |
| FCC NOTICE | 4 |
| CONTROL PANEL OVERVIEW | 5 |
| RESETTING THE MODULE | 5 |
| REAR PANEL OVERVIEW | 6 |
| KIT PERFORMANCE DISPLAY | 6 |
| PLAYING WITH PATTERNS | 8 |
| SONG AND TONE LIST | 12 |
| CARE AND MAINTENANCE | 14 |
| SPECIFICATIONS | 14 |

Thank you for purchasing the LyxPro™ Electronic Drum Kit. This Sound Module Operations Guide is intended to provide you with guidelines to ensure that operation of this product is safe and does not pose risk to the user. Any use that does not conform to the guidelines described in this guide may void the limited warranty.

Please read all directions before using the product and retain this guide for reference. This product is intended for household use only. It is not intended for commercial use.

This product is covered by a limited one-year warranty. Coverage is subject to limits and exclusions. See warranty for details.

FEATURES

- Drum in a variety of environments: with headphones in your room, or connect to a sound system and play with a band.
- Plug in your computer to customize and trigger your own drum sounds.
- 70 pre-recorded songs for you to play along.
- Tailor drums and cymbals to your personal preferences.
- Rim effects standard on all pads and cymbals for a true drumming experience.

SAFETY PRECAUTIONS

- Please make sure you have thoroughly read and understood these instructions, as improper operations of this appliance could lead to personal injury or property damage.
- Do not make any changes or modifications to the construction of this device. Any unapproved changes or modifications to this unit could void your limited warranty.
- Do not attempt to open the unit or make any changes in the circuits or other parts of the unit. There are no user-serviceable parts inside this unit.
- **WARNING:** When using any kind of electrical products, you should follow basic safety precautions, including but not limited to the following:
 - Turn the power switch off when the drum is not in use.
 - To avoid damage to the drum and other devices to which it is connected, turn the power switches of all the related devices off before you connect or disconnect the audio cables.
 - Turn the power off if the main cable is damaged, or if the instrument gets splattered with liquid.
 - Do not switch the unit rapidly on and off, as this places an undue load on the electronic components.
 - Unplug the AC power cord during an electrical storm.
 - Avoid plugging the AC adapter into the same AC outlet as appliances with high power consumption, like electric heaters or ovens.
 - Never apply excessive force to the controls, connectors, pads, or other parts of the instrument.
 - Always unplug cables by firmly gripping the plug, not pulling on the cable.
 - Physical shocks caused by dropping, bumping, or placing heavy objects on the instrument can result in scratches and/or more serious damage.
 - Carefully check the amplifier volume control before starting to play. Playing at an excessively high volume can result in permanent hearing loss or damage.
 - Do not expose this drum kit to the following conditions, to avoid deformation, discoloration, or more serious damage:
 - Direct sunlight (e.g., near a window)
 - High temperatures (e.g., near a heat source, outside, or in a car during the daytime)
 - Excessive humidity
 - Excessive dust

- Strong vibrations
- This drum contains digital circuitry and could cause interference if placed too close to radio or television receivers. If interference occurs, move the drum further away from the affected equipment.

FCC NOTICE

This equipment has been tested and found to comply with the limits for a Class B digital device, pursuant to Part 15 of the FCC Rules.

Also, this equipment has been tested and found to comply with the limits for the following standards:

EN55022-2006

EN55024:1998/+A1:2001/+A2:2003

EN55013:2001/+A1:2003/+A3:2006

EN55020:2007

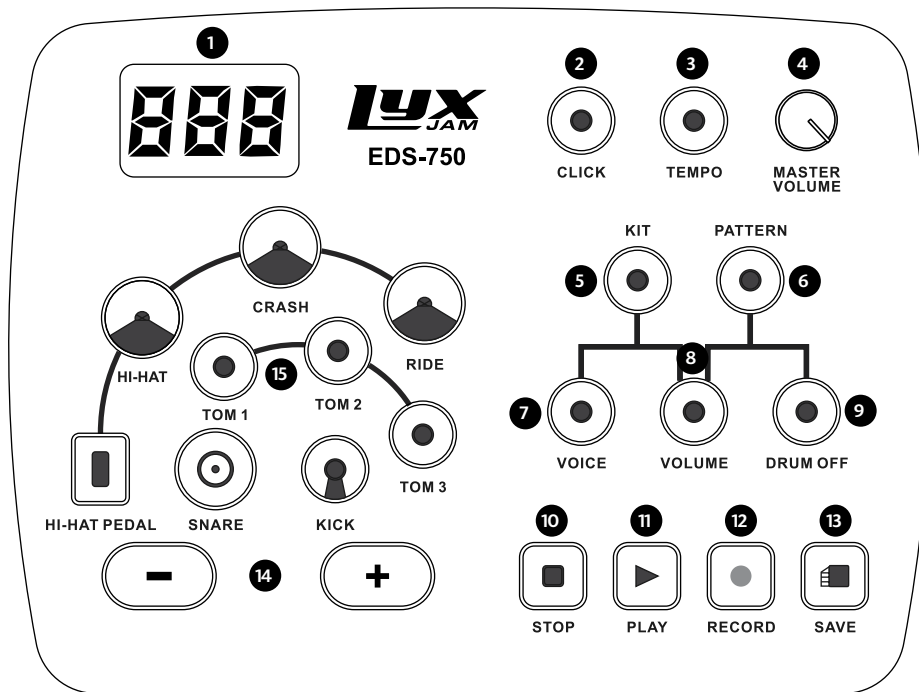
EN61000-3-2:2006

EN61000-3-3:1995/+A1:2001/+A2:2003

These limits are designed to provide reasonable protection against harmful interference in a residential installation. This equipment generates, uses, and can radiate radio frequency energy and, if not installed and used in accordance with the instructions, may cause harmful interference to radio communications. However, there is no guarantee that interference will not occur in a particular installation. If this equipment does cause harmful interference to radio or television reception, which can be determined by turning the equipment off and on, the user is encouraged to try to correct the interference by one or more of the following measures:

- Reorient or relocate the receiving antenna.
- Increase the separation between the equipment and receiver.
- Connect the equipment to an outlet on a different circuit from the circuit to which the receiver is connected.
- Consult the dealer or an experienced radio/TV technician for help.

CONTROL PANEL OVERVIEW



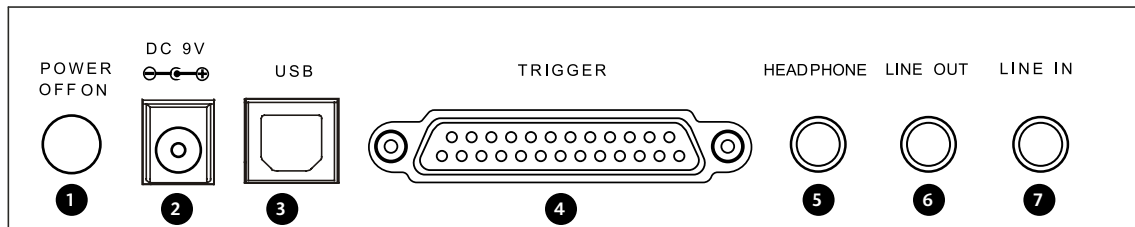
1. **LED Display**
2. **CLICK:** Activates or deactivates the metronome.
3. **TEMPO:** Changes the tempo of the metronome. Also used for recording and pattern playing.
4. **MASTER VOLUME:** Turn this knob clockwise to increase the master volume, or counterclockwise to decrease it.
5. **KIT:** Enter drum kit selection mode.
6. **PATTERN:** Enter pattern play mode.
7. **VOICE:** Enter voice selection and assignment mode.
8. **VOLUME:** Enter volume adjustment mode.
9. **DRUM OFF:** Mute drum sounds in the pattern.
10. **STOP:** Stop the pattern currently playing or recording.
11. **PLAY:** Play the selected pattern.
12. **RECORD:** Enter recording mode.
13. **SAVE:** Saves the recording and settings.
14. **+/-:** Universally moves up or down an item in selecting patterns, volume levels, etc.
15. **Pad Select:** Use these buttons to select a pad to edit while in the kit edit menu, or display pad performance while playing a pattern.

RESETTING THE MODULE

To reset the menu, press and hold both the + and – keys while the power is on, until rES appears on the display. All factory settings will be restored, and all recorded contents will be erased. Do not do this unless you are prepared to have all recordings erased. This action cannot be undone.



REAR PANEL OVERVIEW



- 1. Power Switch:** Turns the sound module on/off.
NOTE: Please do not try to turn the sound module back on immediately after turning it off. Allow five (5) seconds to pass between power cycling in order for the electronic circuits to properly reset.
- 2. Power Jack:** Plug in the DC cable of the included adapter here to provide power to the module.
- 3. USB Jack:** Allows you connect the drum directly to your computer's USB port with a compatible cable. The computer will recognize the drum kit as either Audio Device or E-DRUM.
- 4. Pad Trigger Connector:** Connect the multi-pin trigger connector containing the individual cables for the pads and cymbals here.
- 5. Headphone Jack:** Connect headphones to this jack to listen to your performance privately, without disturbing others.
- 6. Line-Out Jack:** This sound module has no external speaker, so the stereo audio output must come from an audio device connected to this jack or the headphone jack. This jack can be connected to an external amplifier such as a home stereo, PA system, or other standalone amps. If you're connecting to an external mono system, you should use a stereo/mono adapter, as this device produces stereo sound.
- 7. Line-In Jack:** Connect to devices like CD players, mp3 players, mobile phones, and more to provide your own audio tracks with which to play along.

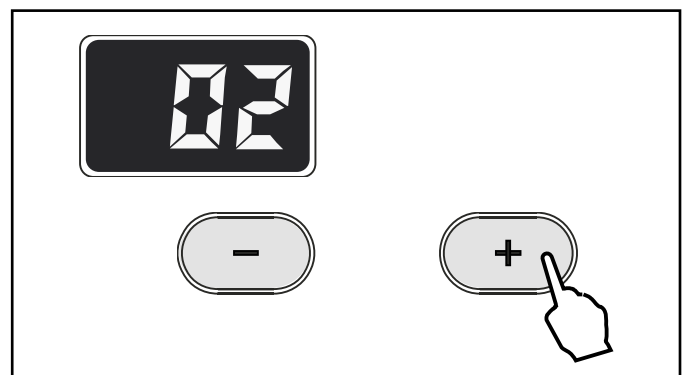
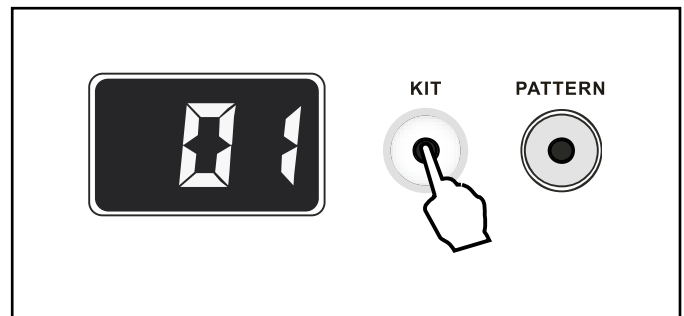
KIT PERFORMANCE DISPLAY

This drum kit features 20 different preset kits from which you can choose. Each kit features a combination of different instrument voices assigned to each drum and cymbal pad, which combine to create a unified style for performing. Any of the preset kits can be edited and saved. Once you turn on the power, the KIT button will be lit, and the kit number will show on the LED display. If you are in a different operating mode, you can press the KIT button to switch to Kit Mode.

Select a Kit

- While in Kit Mode, use the +/- buttons to select a kit. The display will show the current kit number.

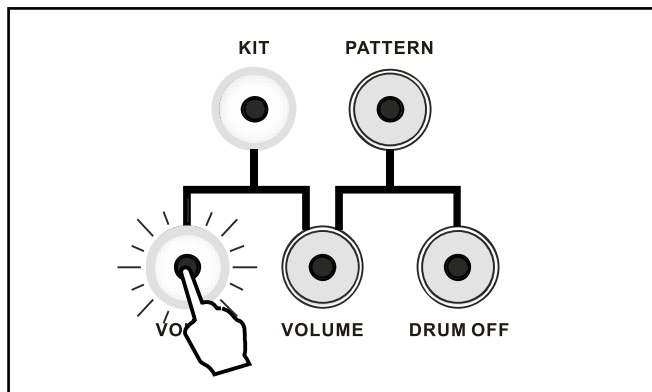
Kit numbers range from 01 – 20, with 01 being the default first kit selected. When you leave Kit Mode and return, the kit you had selected when leaving will be the kit displayed on screen.



Editing a Kit

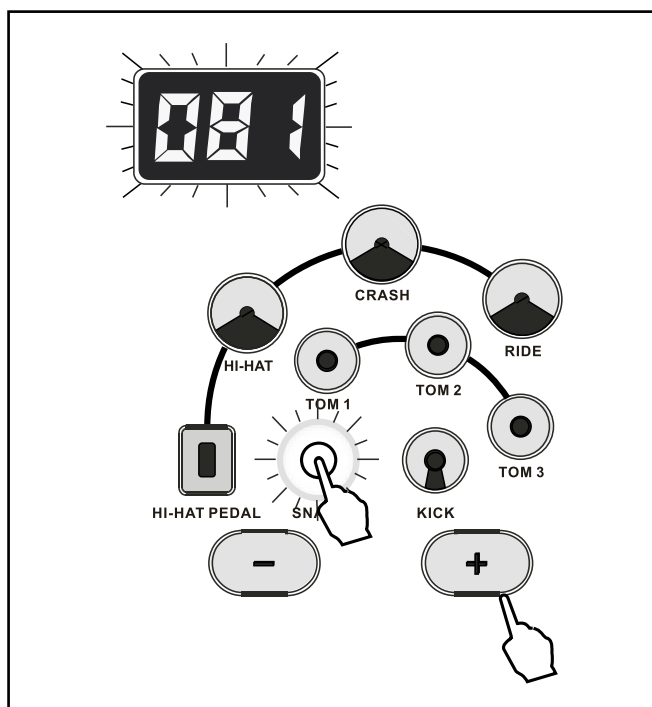
You can change the volume and voice of each pad and save them after selecting a kit.

- Press the button that corresponds to the pad you want to edit to select it. The button will light up and blink, so you know you have the correct pad selected. You will then be able to tap the pad to hear its currently assigned voice.
- Press the VOICE button to assign a voice to the selected pad, and press the VOLUME button to change the volume. When you press the VOICE or VOLUME buttons, they should light up and blink, so you know which feature you're adjusting.

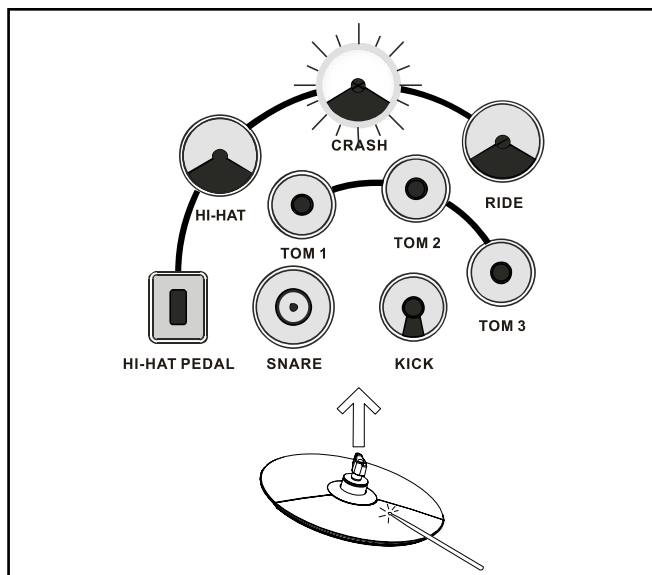


- The pad that is selected by default is Tom 1. Once you start making edits, the last pad you edited will automatically be selected by default. NOTE: The snare has two separate sections, the head and the rim. The hi-hat also has two sounds – open and closed. Press the corresponding button twice to select the alternate part of these pads, and the button will light up blue.

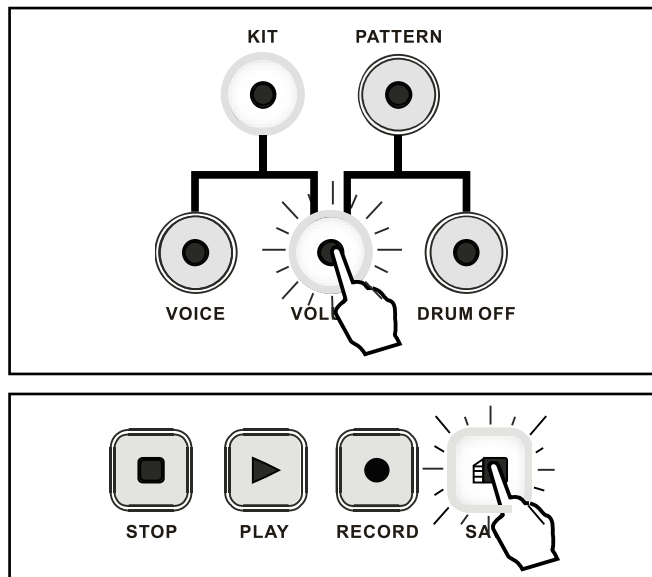
| VOICE INDEX | |
|-------------|---------|
| GM | 1-61 |
| KICK | 62-80 |
| SNARE | 81-120 |
| TOM | 121-147 |
| RIDE | 148-154 |
| CRASH | 155-158 |
| HIHAT | 159-189 |
| PERCUSSION | 190-209 |



- While the voice button and the selected pad you want to edit are blinking, the current voice number will be shown on the LED display. Use the + or – buttons to change the number to the voice tone you want to use. NOTE: To scroll quickly through options, press and hold the + or – button. This helps if you're trying to get through a large range of numbers rapidly.
- If you need to change the setting back to default, press the + and – buttons simultaneously. The number will change back to the original voice assigned to that pad. Test out a voice by striking the pad or pressing the corresponding pad button.
- To switch pads, press another pad button. You can also hit the pad directly (or use the hi-hat pedal) to select that pad. Please note, striking the pad too lightly may not register, and you may need to strike it more firmly.



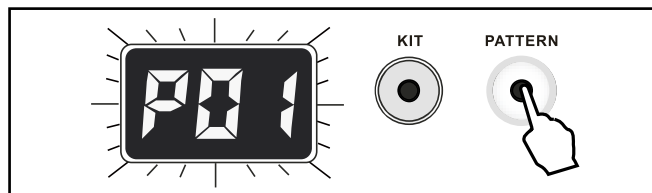
- To adjust the volume of the pad while selecting a voice, press the VOLUME button. It will light up and start blinking.
- The display will show the current numerical volume of the pad from 0 – 127. Use the +/- buttons to adjust it as you desire.
- All assignable song/tones can be found in the song/ tone list on pages 12 – 13.
- To exit and return to kit selection mode, press the blinking VOICE or VOLUME button again. The button will no longer be lit up, but your settings will still be erased when you power down the kit. To ensure your settings remain in place even when you power cycle the drum kit, make sure to press the SAVE button!



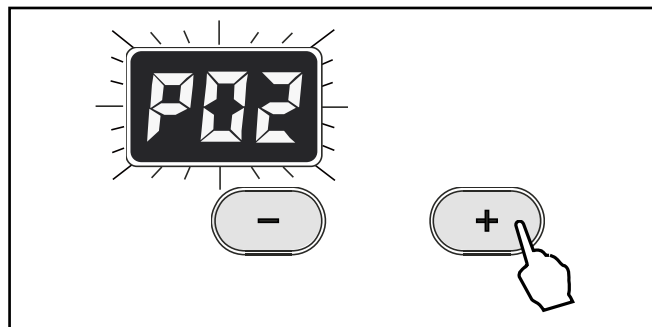
PLAYING WITH PATTERNS

There are 50 built-in patterns with which you can play along or just listen to for enjoyment or practice.

- To enter pattern mode, press the PATTERN button. The indicator around the button will light up, and the display will blink with P and the pattern number.



- Use the + or – buttons to select a pattern.



- Press the PLAY button to start playing the pattern. The display will show the measure number, and the pad select buttons will flash to indicate which pad is being played (either by you or by the pattern).



- When the pattern finishes playing, it will restart from the beginning. You can press STOP at any time to stop the pattern from playing.
- While playing, you can change or select a pattern from the list by pressing the +/- buttons. The next or previous pattern number will show on the display, and, once selected, start playing from the first measure.
- While playing, you can change the tempo by first pressing the TEMPO button.

- The indicator will light up and start blinking, while the display blinks the current tempo.

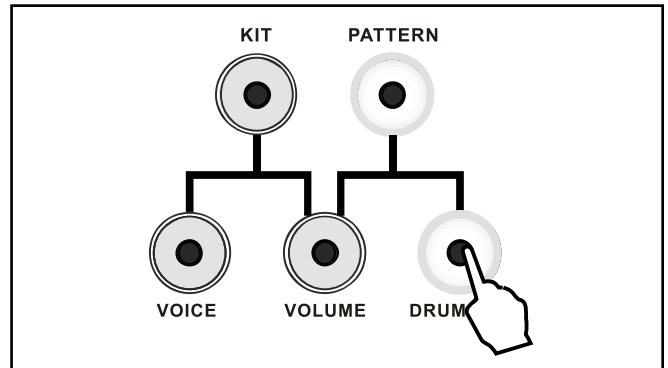
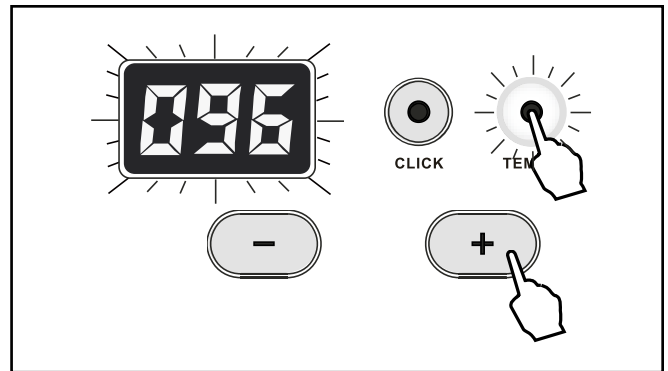
- You can use the + or – buttons to increase or decrease the tempo from 40-240 bpm.

NOTE: To scroll quickly through options, press and hold the + or – button. This helps if you're trying to get through a large range of numbers rapidly.

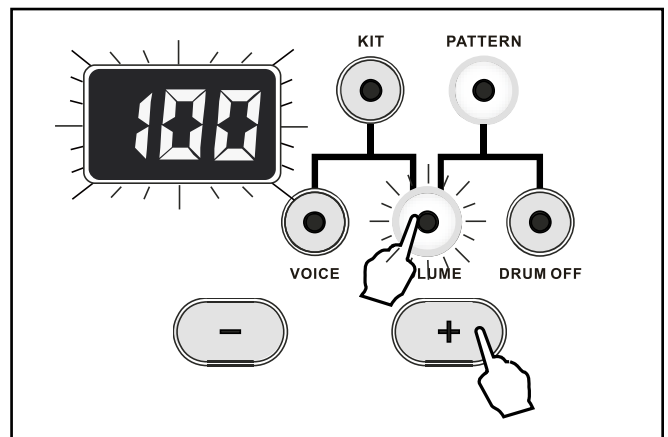
- To return the tempo to the default value, press the + and – buttons at the same time.

- Once you've adjusted the tempo to your ideal value, wait three (3) seconds or press the TEMPO button again, and the display will return to the measure you were previously at, using your new tempo.

- While the pattern is playing, you can also drum on the pads. All patterns consist of a drum pattern and orchestral background music. If you would prefer not to hear the drum section, you can press the DRUM OFF button to mute the drums and play your own rhythms.



- To adjust the volume of the pattern while you're playing along with it, press the VOLUME button. The button will light up, and the LED display will show the current volume and start blinking.
- The display will show the current numerical volume of the pattern from 0 – 127. Use the +/- buttons to adjust it as you desire.
- Once you've adjusted the volume to your ideal setting, wait three (3) seconds or press VOLUME again, and the display will return to the measure you were previously playing, using the new volume.
- To exit, press the KIT button or press the PATTERN button again, and you'll be returned to Kit Mode.

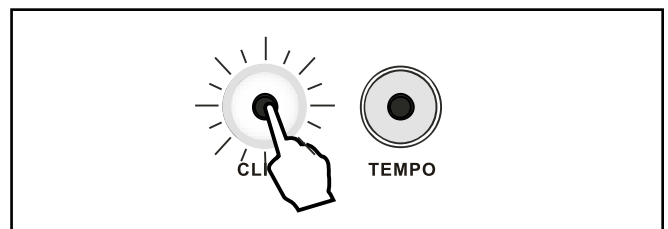


Turn Metronome On/Off

- Press the CLICK button to activate or deactivate the metronome.
- The metronome will play a steady beat at the currently set tempo, allow you to practice or perform with the beat.
- The metronome tempo is adjustable by pressing the TEMPO button.

- The indicator will light up and start blinking, while the display blinks the current tempo.

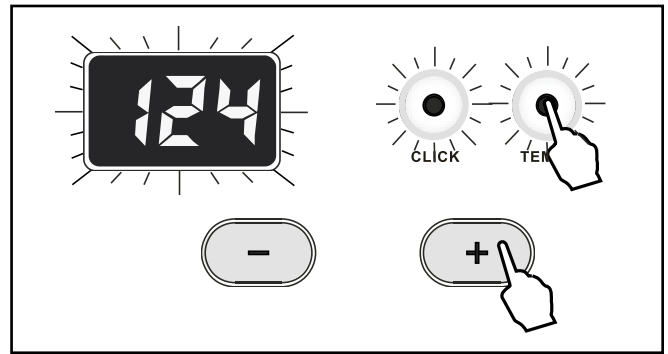
- You can use the + or – buttons to increase or decrease



the tempo from 40-240 bpm.

- To return the tempo to the default value, press the + and - buttons at the same time.

- Once you've adjusted the tempo to your ideal value, wait three (3) seconds or press the TEMPO button again, and the display will return to the window previously displayed.



Record

Your drumkit includes the capability to record your own performance and save it as pattern #51—you can even record yourself playing along with another pattern!

- Select the kit and the pattern (if any) that you wish to use for the recording, along with adjustments to the voices and volumes of the pads, and set the tempo, if you want, for the metronome.

- To record without a pattern accompaniment:

- Press the KIT button.

- Press the RECORD button.

- You will hear a 4-beat countdown at your selected tempo, and then the module will begin recording.

- To record with a pattern:

- Press the PATTERN button.

- Use the +/- buttons to select the pattern with which you'd like to record.

- Press the RECORD button.

- You will hear a 4-beat countdown at your selected tempo, and then the module will begin recording.

NOTE: If you have the metronome playing, it will only guide you; the metronome audio will not be recorded.

- To save your recording:

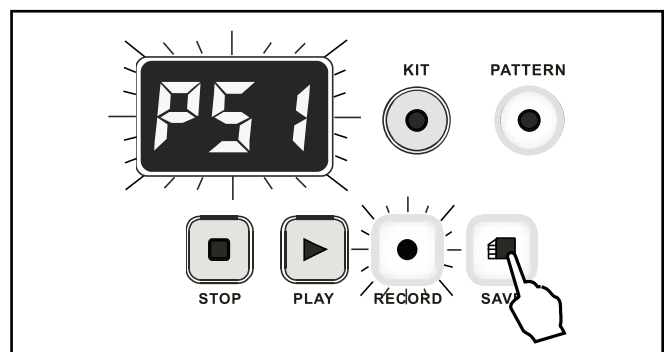
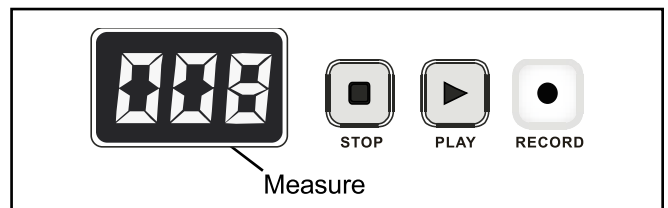
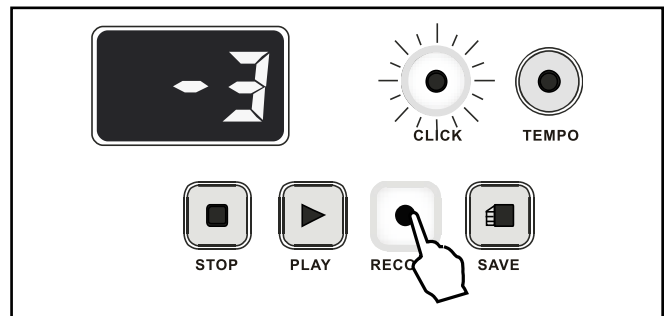
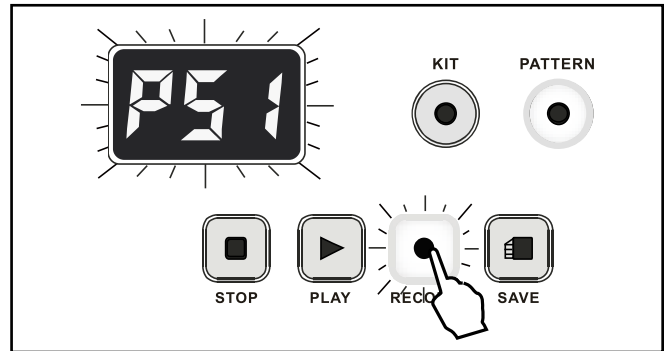
- Press the STOP or SAVE button.

- The RECORD button will turn off, and the PATTERN button will stay lit.

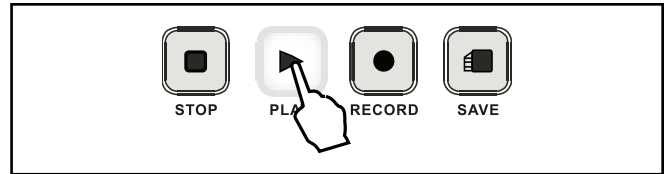
- The display will show P51.

- Even if you power cycle the module, your pattern will be saved.

- If you want to cancel your recording without saving, press the KIT button at any point. The recording will be terminated, and the drum will return to Kit Mode.



- To play your pattern back:
 - Enter Pattern Mode by pressing the PATTERN button.
 - Use the +/- buttons to select P51 from the list of patterns.
 - Press the PLAY button.



USB & MIDI Connections

The Musical Instrument Digital Interface, or MIDI, is a world-wide standard communication interface. It allows electronic musical instruments and computers to communicate with each other so that instructions and other data can pass between them. This makes it possible to create a system of MIDI instruments and devices offering more versatility and control than just that of isolated instruments. It also allows you to edit your playing from the computer, or play back a MIDI song on your computer while you drum along with it.

The USB connector allows you to connect the drum kit directly to your computer via a compatible cable. It can connect without driver installation on both Windows® and MacOS systems. The drum will be recognized as a USB audio device to receive and transmit the MIDI messages described above.

Application Chart

| Function | Transmitted | Recognized | Remarks |
|--|-------------------|-----------------|---|
| Basic Channel | 10 | 1-16 | |
| Note Number | 0-127 | 0-127 | |
| Velocity: Note ON | 1-127 64 | 0-127 0-127 | |
| Major Controls: B9h 04h xxh Bxh 79h 00h Bxh 7Bh 00h | Yes Yes Yes | X Yes Yes | Hi-Hat pedal control Reset All Controller All Notes OFF |
| Program Change | X | Yes * | |
| System Exclusive | Yes | Yes ** | |
| RPN | X ** | Yes ** | |
| NRPN | Yes | Yes ** | |

*Channel 10 supports Bank 0 only

**If you need detailed information about Exclusive, RPN, and NRPN, please contact your vendor or an authorized dealer.

NOTE: The transmitted notes through Channel 10 for each pad is fixed according to the below chart:

| PAD | NOTE |
|---------------|------|
| Tom1 | 48 |
| Tom2 | 45 |
| Tom3 | 43 |
| Snare | 38 |
| Snare Rim | 37 |
| Crash | 49 |
| Ride | 51 |
| Hi-Hat Open | 46 |
| Hi-Hat Closed | 42 |
| Hi-Hat Pedal | 44 |
| Kick | 36 |

SONG AND TONE LIST

GM

| | | | |
|----|------------|----|------------|
| 01 | HighQ | 32 | VibraSlap |
| 02 | Slap | 33 | RideCymb2 |
| 03 | ScraPush | 34 | HiBongo |
| 04 | ScraPull | 35 | LowBongo |
| 05 | Stick | 36 | MuteConga |
| 06 | SquarClick | 37 | HiConga |
| 07 | MetroClick | 38 | LowConga |
| 08 | MetroBell | 39 | HighTimbal |
| 09 | KickDrum2 | 40 | LowTimbale |
| 10 | KickDrum1 | 41 | HighAgogo |
| 11 | SideStick | 42 | LowAgogo |
| 12 | SnareDrum2 | 43 | Cabasa |
| 13 | HandClap | 44 | Maracas |
| 14 | SnareDrum1 | 45 | ShortWhist |
| 15 | LoFloTom2 | 46 | LongWhist |
| 16 | CloseHH | 47 | ShortGuiro |
| 17 | LowFloTom1 | 48 | LongGuiro |
| 18 | PedalHH | 49 | Claves |
| 19 | LowTom | 50 | Hi W-Block |
| 20 | OpenHi-hat | 51 | Lo W-Block |
| 21 | Low-midTom | 52 | MuteCuica |
| 22 | Hi-midTom | 53 | OpenCuica |
| 23 | CrashCymb1 | 54 | MuteTriang |
| 24 | RHighTom | 55 | OpenTriang |
| 25 | RideCymb1 | 56 | Cabasa |
| 26 | ChCymbal | 57 | Shaker |
| 27 | RideBell | 58 | Belltree |
| 28 | Tambourine | 59 | Castanets |
| 29 | SplashCymb | 60 | MuteSurdo |
| 30 | Cowbell | 61 | OpenSurdo |
| 31 | CrashCymb2 | | |

KICK LIST

| | | | |
|----|---------|----|---------|
| 01 | Kick 1 | 11 | Kick 11 |
| 02 | Kick 2 | 12 | Kick 12 |
| 03 | Kick 3 | 13 | Kick 13 |
| 04 | Kick 4 | 14 | Kick 14 |
| 05 | Kick 5 | 15 | Kick 15 |
| 06 | Kick 6 | 16 | Kick 16 |
| 07 | Kick 7 | 17 | Kick 17 |
| 08 | Kick 8 | 18 | Kick 18 |
| 09 | Kick 9 | 19 | Kick 19 |
| 10 | Kick 10 | | |

SNARE LIST

| | | | |
|----|----------|----|----------|
| 01 | Snare 1 | 21 | Snare 21 |
| 02 | Snare 2 | 22 | Snare 22 |
| 03 | Snare 3 | 23 | Snare 23 |
| 04 | Snare 4 | 24 | Snare 24 |
| 05 | Snare 5 | 25 | Snare 25 |
| 06 | Snare 6 | 26 | Snare 26 |
| 07 | Snare 7 | 27 | Snare 27 |
| 08 | Snare 8 | 28 | Snare 28 |
| 09 | Snare 9 | 29 | Snare 29 |
| 10 | Snare 10 | 30 | Snare 30 |
| 11 | Snare 11 | 31 | Snare 31 |
| 12 | Snare 12 | 32 | Snare 32 |
| 13 | Snare 13 | 33 | Snare 33 |
| 14 | Snare 14 | 34 | Snare 34 |
| 15 | Snare 15 | 35 | Snare 35 |
| 16 | Snare 16 | 36 | Snare 36 |
| 17 | Snare 17 | 37 | Snare 37 |
| 18 | Snare 18 | 38 | Snare 38 |
| 19 | Snare 19 | 39 | Snare 39 |
| 20 | Snare 20 | 40 | Snare 40 |

TOM LIST

| | | | |
|----|--------|----|--------|
| 01 | Tom 1 | 15 | Tom 15 |
| 02 | Tom 2 | 16 | Tom 16 |
| 03 | Tom 3 | 17 | Tom 17 |
| 04 | Tom 4 | 18 | Tom 18 |
| 05 | Tom 5 | 19 | Tom 19 |
| 06 | Tom 6 | 20 | Tom 20 |
| 07 | Tom 7 | 21 | Tom 21 |
| 08 | Tom 8 | 22 | Tom 22 |
| 09 | Tom 9 | 23 | Tom 23 |
| 10 | Tom 10 | 24 | Tom 24 |
| 11 | Tom 11 | 25 | Tom 25 |
| 12 | Tom 12 | 26 | Tom 26 |
| 13 | Tom 13 | 27 | Tom 27 |
| 14 | Tom 14 | | |

HIHAT LIST

| | | | |
|----|----------|----|----------|
| 01 | HiHat 1 | 17 | HiHat 17 |
| 02 | HiHat 2 | 18 | HiHat 18 |
| 03 | HiHat 3 | 19 | HiHat 19 |
| 04 | HiHat 4 | 20 | HiHat 20 |
| 05 | HiHat 5 | 21 | HiHat 21 |
| 06 | HiHat 6 | 22 | HiHat 22 |
| 07 | HiHat 7 | 23 | HiHat 23 |
| 08 | HiHat 8 | 24 | HiHat 24 |
| 09 | HiHat 9 | 25 | HiHat 25 |
| 10 | HiHat 10 | 26 | HiHat 26 |
| 11 | HiHat 11 | 27 | HiHat 27 |
| 12 | HiHat 12 | 28 | HiHat 28 |
| 13 | HiHat 13 | 29 | HiHat 29 |
| 14 | HiHat 14 | 30 | HiHat 30 |
| 15 | HiHat 15 | 31 | HiHat 31 |
| 16 | HiHat 16 | | |

RIDE LIST

| | | | |
|----|--------|----|--------|
| 01 | Ride 1 | 05 | Ride 5 |
| 02 | Ride 2 | 06 | Ride 6 |
| 03 | Ride 3 | 07 | Ride 7 |
| 04 | Ride 4 | | |

PERC LIST

| | | | |
|----|---------|----|---------|
| 01 | Perc 1 | 11 | Perc 11 |
| 02 | Perc 2 | 12 | Perc 12 |
| 03 | Perc 3 | 13 | Perc 13 |
| 04 | Perc 4 | 14 | Perc 14 |
| 05 | Perc 5 | 15 | Perc 15 |
| 06 | Perc 6 | 16 | Perc 16 |
| 07 | Perc 7 | 17 | Perc 17 |
| 08 | Perc 8 | 18 | Perc 18 |
| 09 | Perc 9 | 19 | Perc 19 |
| 10 | Perc 10 | 20 | Perc 20 |

CRASH LIST

| | | | |
|----|---------|----|---------|
| 01 | Crash 1 | 03 | Crash 3 |
| 02 | Crash 2 | 04 | Crash 4 |

CARE AND MAINTENANCE

This drum kit will need to be serviced by an authorized serviceperson when or if the following conditions occur:

- The power supply cord or plug has been damaged.
- Liquid has been splattered into the unit or it has been exposed to rain.
- The instrument is not operating normally, or exhibits a marked change in performance.
- The instrument has been dropped or the cabinet has been damaged.

To clean the drum kit and sound module:

- Clean both parts with a dry or lightly damp soft cloth.
- Do not use paint thinner or petrochemical-based polishes .

SPECIFICATIONS

- Voices: 209
- Polyphony: 81
- Drum Kits: 20 Preset Kits
- Patterns: 50 Songs, Drum Mute
- Metronome Settings: On/Off, Tempo
- Pad Edit Options: Voice, Volume
- Recordings: 1 Song
- Display: 3-Segment LED
- Power: 9 V DC
- Auxiliary Sockets: Headphones, Line In, Line Out, USB, Power, 25-Pin Trigger Connection Socket

QUESTIONS OR CONCERNS? WE WANT TO HEAR FROM YOU!

info@lyxpro.com

1-866-849-3049

LyxPro, LyxJam, and their associated logos are trademarks of C&A IP Holdings, LLC. in the U.S.

All other products, brand names, company names, and logos are trademarks of their respective owners, used merely to identify their respective products, and are not meant to connote any sponsorship, endorsement or approval.

Distributed by C&A Marketing, Inc., 114 Tived Lane East, Edison, NJ 08837.

© 2020. C&A IP Holdings, LLC. All Rights Reserved.